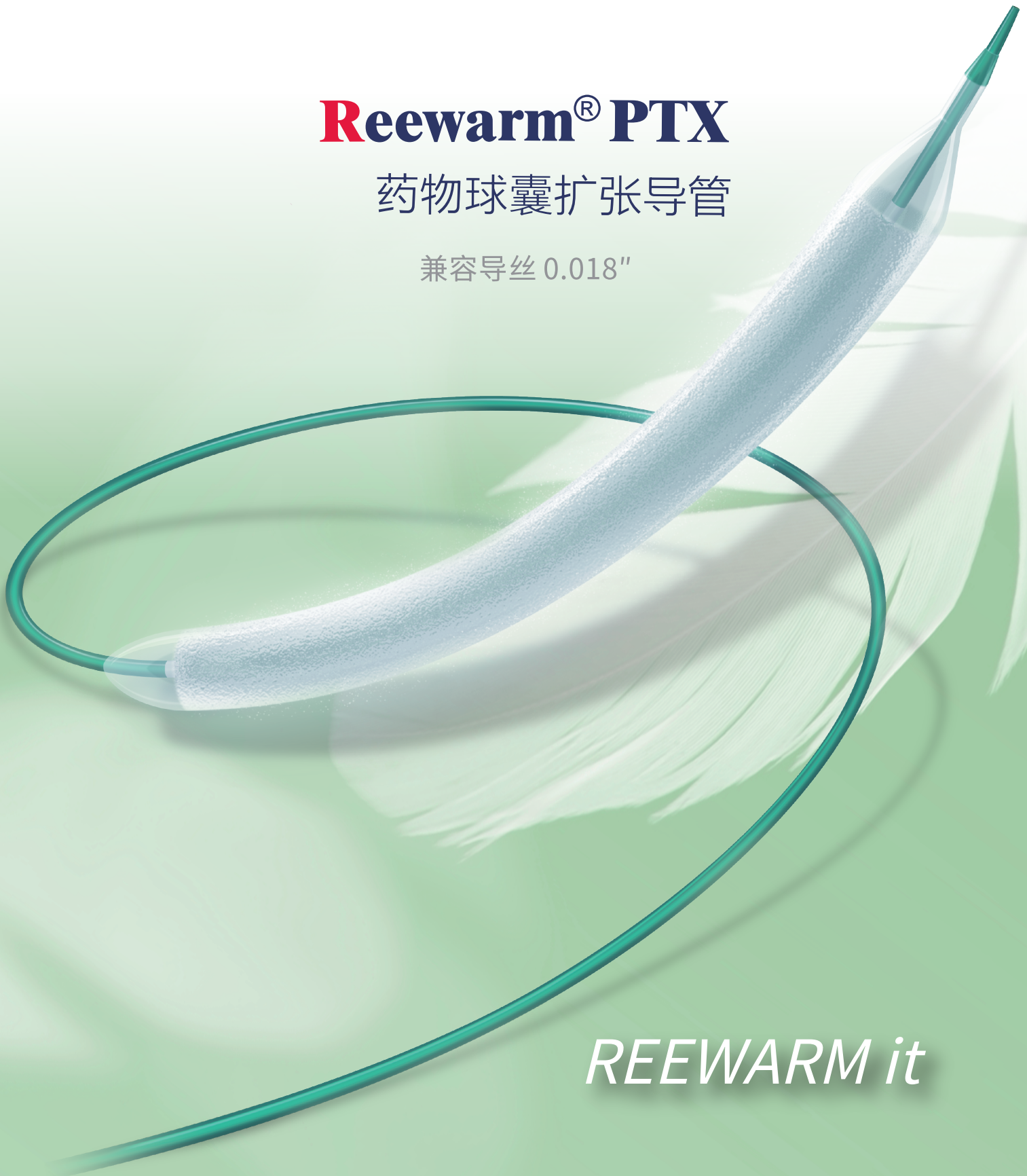




Reewarm[®] PTX

药物球囊扩张导管

兼容导丝 0.018"



REEWARM it

Reewarm® PTX

药物球囊扩张导管

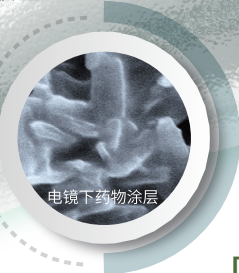
专利立体式雾化喷涂工艺, 药物涂层均匀稳定

载药量: $3 \mu\text{g}/\text{mm}^2$

药物: 紫杉醇

介质: 碘普罗胺

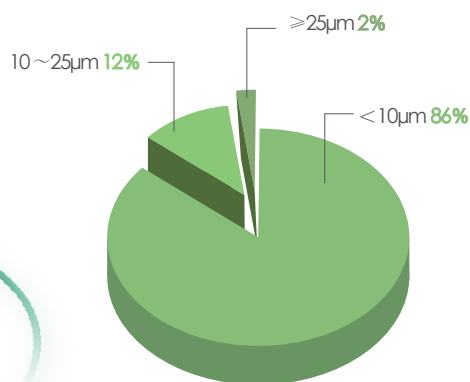
8倍提升紫杉醇吸收量^[1]



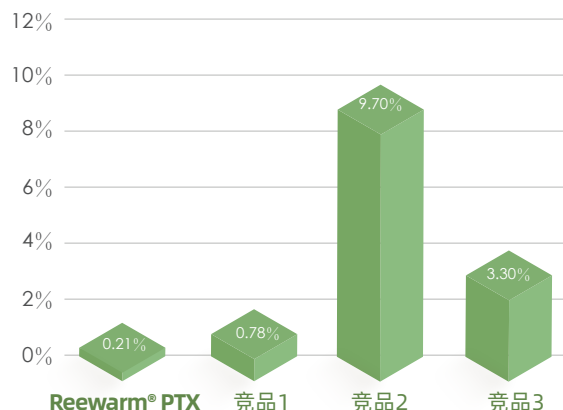
微粒粒径小, 血管壁吸收率高

100% 药物+载体可在血液中3小时快速溶解

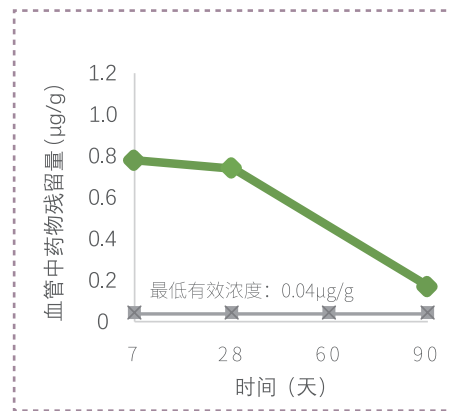
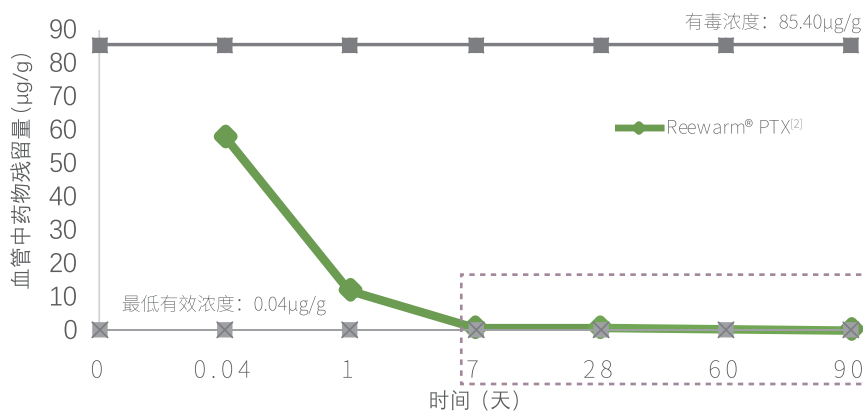
[Reewarm® PTX 微粒粒径分布图]



[$\geq 50\mu\text{m}$ 微粒占比]



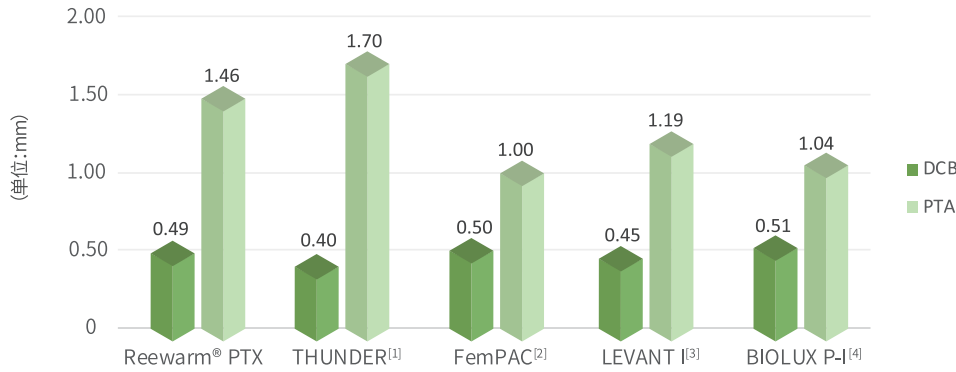
单次给药, 长期抑制



[1]European Heart Journal (2003) 24, 1462-1467

[2]通过动物实验测得

主要终点:6个月靶病变晚期管腔丢失 (LLL)



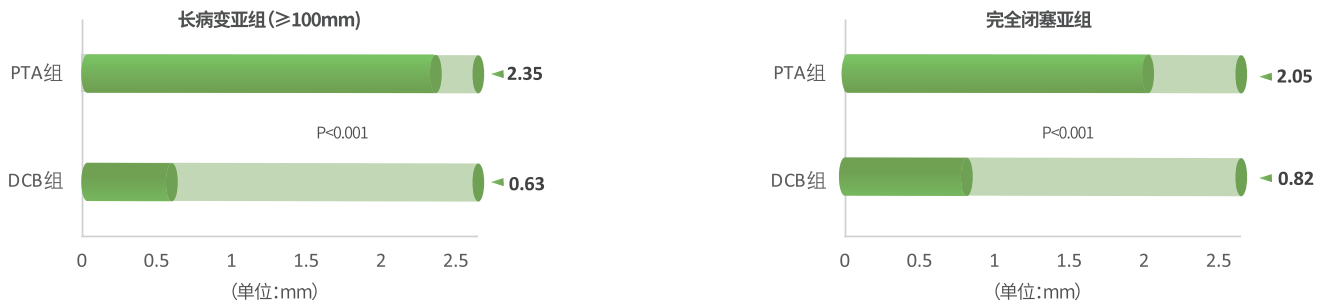
注:LLL定义为术后即刻靶血管最小腔直径(MLD)与术后6个月靶血管MLD的差别。

- [1] N Engl J Med 2008; 358: 689-699.
- [2] Circulation 2008;118:1358-1365.
- [3] JACC Cardiovasc Interv 2014; 7: 10-19.
- [4] JEVT 2015; 22: 14-21.

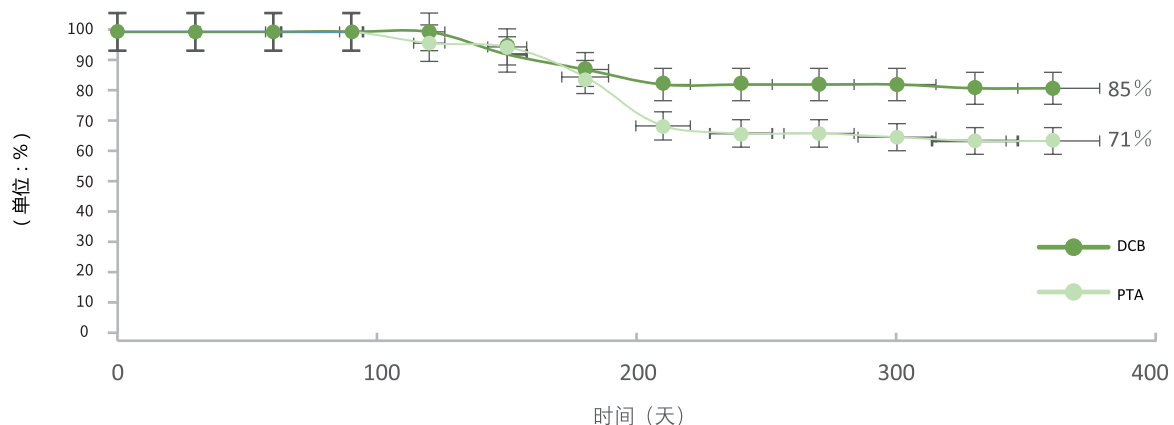
与其他临床试验相比, Reewarm® PTX临床试验涵盖难度更高的病变

	Reewarm® PTX		THUNDER ^[1]		FemPAC ^[2]		LEVANT I ^[3]		BIOLUX P-I ^[4]	
	DCB	PTA	DCB	PTA	DCB	PTA	DCB	PTA	DCB	PTA
平均病变长度 (mm)	96±48	91±44	74±65		NA	NA	81±37	80±38	51±47	69±57
完全闭塞 (%)	49	55	27		19	13	41	42	38	

6个月随访亚组分析 (LLL)



次要终点:12个月免于靶病变血运重建率 (Freedom from All-TLR)



型号规格			球囊直径 (mm)	球囊长度 (mm)	名义压力 (atm)	额定爆破压力 (atm)	可through管直径 (F)	型号规格			球囊直径 (mm)	球囊长度 (mm)	名义压力 (atm)	额定爆破压力 (atm)	可through管直径 (F)	
导管有效长度 90cm	导管有效长度 130cm	导管有效长度 150cm						导管有效长度 90cm	导管有效长度 130cm	导管有效长度 150cm						
DEB20020090	/	DEB20020150	2.0	20	6	14	5	DEB40020090	DEB40020130	DEB40020150	4.0	20	6	14	5	
DEB20040090	/	DEB20040150		40				DEB40040090	DEB40040130	DEB40040150						40
DEB20060090	/	DEB20060150		60				DEB40060090	DEB40060130	DEB40060150						60
DEB20080090	/	DEB20080150		80				DEB40080090	DEB40080130	DEB40080150						80
DEB20100090	/	DEB20100150		100				DEB40100090	DEB40100130	DEB40100150						100
DEB20120090	/	DEB20120150		120				DEB40120090	DEB40120130	DEB40120150						120
DEB20150090	/	DEB20150150		150				DEB40150090	DEB40150130	DEB40150150						150
DEB20220090	/	DEB20220150		220				DEB40220090	DEB40220130	DEB40220150						220
DEB25020090	/	DEB25020150	2.5	20	6	14	5	DEB50020090	DEB50020130	/	5.0	20	6	13	5	
DEB25040090	/	DEB25040150		40				DEB50040090	DEB50040130	/						40
DEB25060090	/	DEB25060150		60				DEB50060090	DEB50060130	/						60
DEB25080090	/	DEB25080150		80				DEB50080090	DEB50080130	/						80
DEB25100090	/	DEB25100150		100				DEB50100090	DEB50100130	/						100
DEB25120090	/	DEB25120150		120				DEB50120090	DEB50120130	/						120
DEB25150090	/	DEB25150150		150				DEB50150090	DEB50150130	/						150
DEB25220090	/	DEB25220150		220				DEB50220090	DEB50220130	/						220
DEB30020090	/	DEB30020150	3.0	20	6	14	5	DEB60020090	DEB60020130	/	6.0	20	6	13	6	
DEB30040090	/	DEB30040150		40				DEB60040090	DEB60040130	/						40
DEB30060090	/	DEB30060150		60				DEB60060090	DEB60060130	/						60
DEB30080090	/	DEB30080150		80				DEB60080090	DEB60080130	/						80
DEB30100090	/	DEB30100150		100				DEB60100090	DEB60100130	/						100
DEB30120090	/	DEB30120150		120				DEB60120090	DEB60120130	/						120
DEB30150090	/	DEB30150150		150				DEB60150090	DEB60150130	/						150
DEB30220090	/	DEB30220150		220				DEB60220090	DEB60220130	/						220
DEB35020090	/	DEB35020150	3.5	20	6	14	5	DEB70020090	DEB70020130	/	7.0	20	6	12	6	
DEB35040090	/	DEB35040150		40				DEB70040090	DEB70040130	/						40
DEB35060090	/	DEB35060150		60				DEB70060090	DEB70060130	/						60
DEB35080090	/	DEB35080150		80				DEB70080090	DEB70080130	/						80
DEB35100090	/	DEB35100150		100				DEB70100090	DEB70100130	/						100
DEB35120090	/	DEB35120150		120				DEB70120090	DEB70120130	/						120
DEB35150090	/	DEB35150150		150				DEB70150090	DEB70150130	/						150
DEB35220090	/	DEB35220150		220				DEB70220090	DEB70220130	/						220

型号规格代码: DEB XX XXX XXX

示例: DEB 20 220 150

